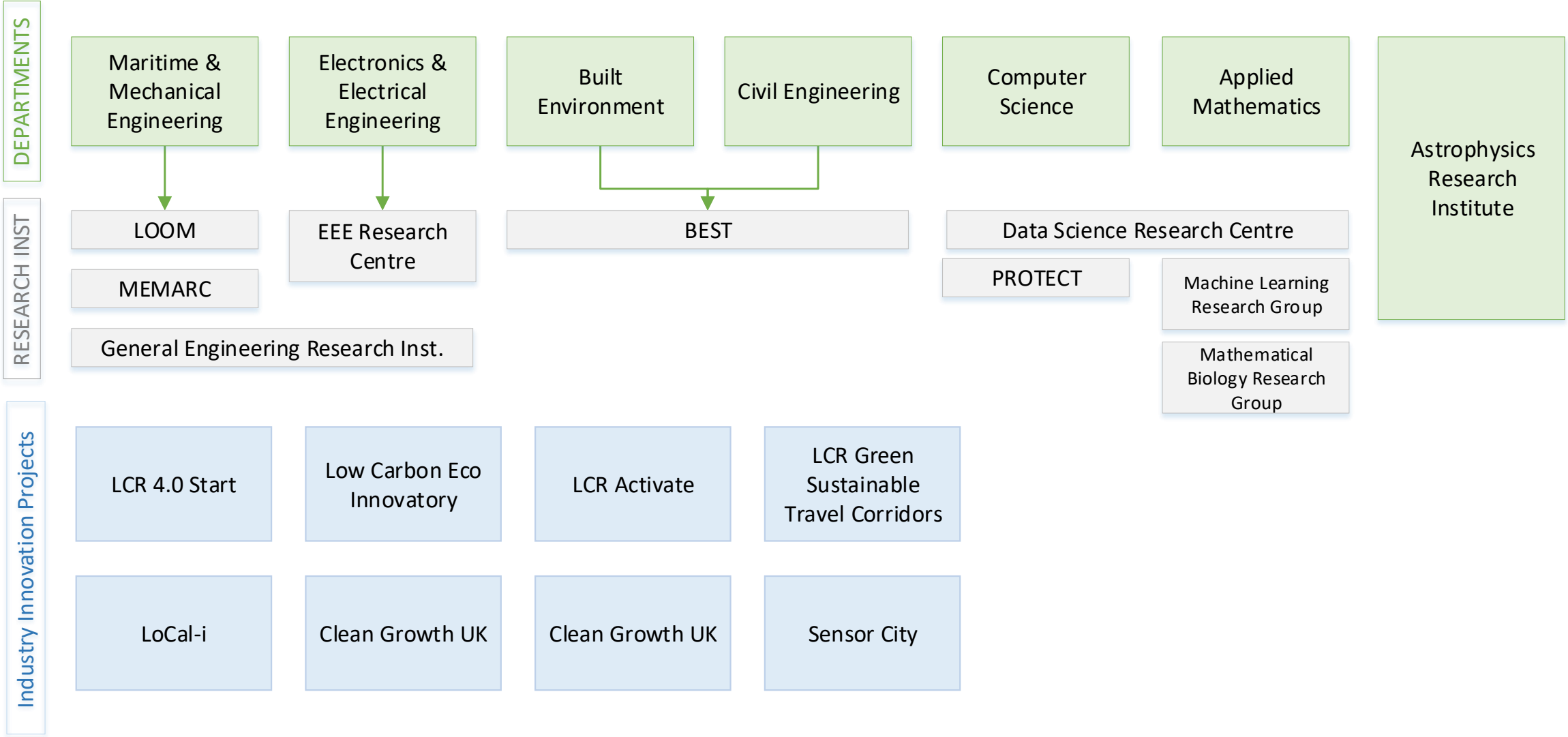


Welcome to Liverpool John Moores University



Faculty of Engineering & Technology

CURRENT FACULTY STRUCTURE



Faculty Research Institutes

Astrophysics Research Institute

Telescope, Galaxy Formation and Evolution, Time Domain, Astronomical Instrumentation, Star Formation

Liverpool Logistics, Offshore and Marine Research Institute

3D-simulation of logistics movements, Optimisation & systems design

Built Environment and Sustainable Technologies Research Institute (BEST)

Construction & Management, Radio Frequency and Microwave Technology, Environmental & Materials Technologies

Mechanical Engineering & Materials Research Centre (MEMARC)

Fracture and contact mechanics, Materials development and processing
Dynamics and control systems

General Engineering Research Institute (GERI)

Surface Engineering, Drone technologies and Sensing, Advanced Manufacturing Technologies

Electrical and Electronic Engineering Research Centre

Microelectronics & Electric Machines and Drives

Research Centre for Critical Infrastructure Computer Technology and Protection (PROTECT)

Networking and Distributed Systems, Gaming, Security Technologies, data analytics, IoT

Data Science Research Centre

Machine learning methods, clinical decision support, sports analytics and digital marketing.

ENTERPRISE, IMPACT & INDUSTRY ENGAGEMENT

LCR >>>
ACTIVATE

SENSORCITY
Making the future happen



Low Carbon Eco-Innovatory



bre INNOVATION
PARKS NETWORK
urbansplash

LCR4.0
Together for Manufacturing.





